



Professional Seal

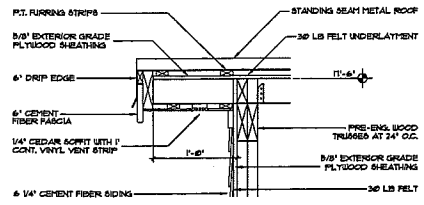
HERBERT J. SANDS AIA ARCHITECT ■ 1260 EAU GALIE BLVD., SUITE F ■ MELBOURNE, FLORIDA 32836 ■ 321/269-3646

Mainstreet Building Renovation
 Bayfront Community Redevelopment Agency
 Palm Bay
 Florida

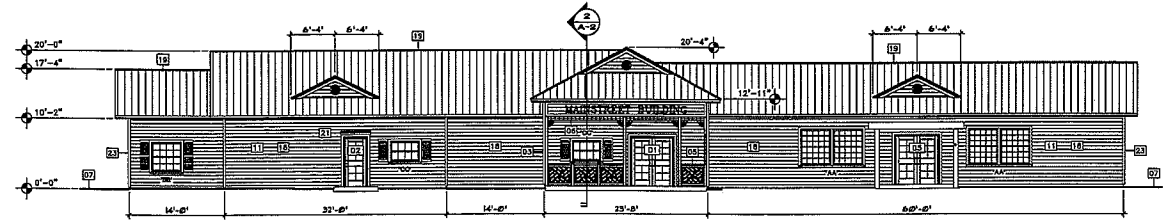
Project No: 07-09
 Date: 03-10-08
 Drawn by: A. Giulio
 Dept No:

A-6

13 of 19

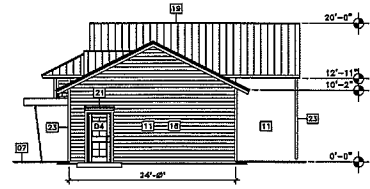


A
ROOF DETAIL 1/2" = 1'-0"
A-B
 TYPICAL GABLE END

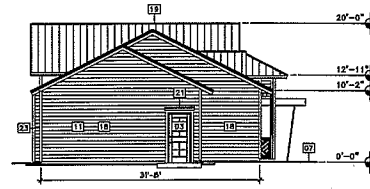


WEST ELEVATION 1/8" = 1'-0"
 ARCHITECTURAL

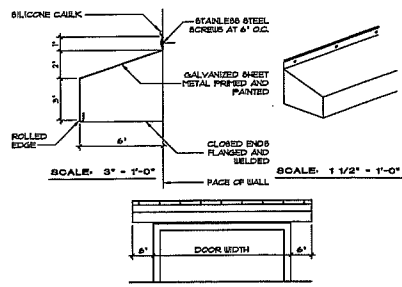
ELEVATION GENERAL NOTES	
01 ELECTRICAL SERVICE AND DISCONNECT SWITCH.	13 A/C CONDENSER LOCATION SEE SHEET M-1
02 TRACO TR-880 HISTORIC FIXED COMMERCIAL THERMAL ALUMINUM WINDOWS, NONHOLDING LAMINATED GLASS LITES, DURAMAR PAINT FINISH, EXTERIOR-MOUNTED, NON-REMOVABLE MUNTINS. SEE DETAILS SHEET A-1 AND A-3	14 WALL MOUNTED LIGHT FIXTURE.
03 WHITE VINYL CORNER BRACKET MODEL PL81-W BY PATIO LACE INC.	15 8" ENAMEL PAINTED ALUMINUM ADDRESS NUMBERS VERIFY WITH OWNER.
04 FRESH AIR INTAKE GRILL IN CEILING SEE M-1 FOR SPECS.	16 12" ENAMEL PAINTED ALUMINUM BUILDING IDENTIFICATION LETTERS SEE SPECS.
05 P.T. WOOD DECORATIVE GUARDRAIL DESIGN BASED ON CHENDALE LXT RAILING BY POLYTRAL SYSTEMS INC.	17 EXHAUST LOUVER SEE M-1 FOR SPECIFICATIONS TOP OF WALL OPENING AT 10'-0" A.F.F.
06 WHITE VINYL SPANDREL TRIM MODEL PLS-1 BY PATIO LACE INC.	18 1/4" CEMENT FIBER SIDING ON 2 X 2 P.T. FURRING PRIME AND PAINT AS SPECIFIED.
07 SLOPE WALK AND GRADE AWAY FROM BUILDING	19 NEW STANDING SEAM METAL ROOF.
08 SEE MECH. FOR EXHAUST LOUVER LOCATIONS.	20 STAINLESS STEEL VENTILATION LOUVER 24" DIAMETER. INSTALL 3/8" INSECT SCREEN ON INTERIOR SIDE OF WALL.
09 SEE SHEET M-1 FOR A/C CONDENSER LOCATIONS.	21 PROVIDE GALVANIZED METAL HOOD OVER DOORS D2, D3 AND D4. SEE DETAIL E/A-7.
10 SEE ELECTRICAL FOR LIGHT FIXTURE LOCATIONS.	22 3-1/4" CEMENT FIBER TRIM.
11 PAINT CEMENT FIBER SIDING SEMI-GLOSS. PAINT ALL CEDAR SMOOTH AND TRIM SEMI-TRANSPARENT. STAIN ALL CEDAR SMOOTH AND TRIM SEMI-TRANSPARENT.	23 EXHAUST FAN MOTOR SHROUD. SEE SHEET MP-1.
12 ALUMINUM TOILET EXHAUST LOUVER TOP AT 10'-0" A.F.F.	24 CONTRACTOR SHALL PROVIDE A COMPLETE RAIN WATER DUTTER AND POWERFLUIT SYSTEM, 8" ALUMINUM GUTTER, PAINTED WHITE. COORDINATE DOWNSPOUT ROUTE WITH CIVIL ENGINEERING DRAIN DRAWINGS.



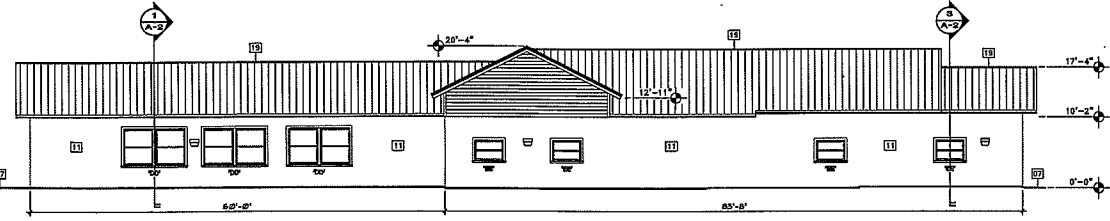
SOUTH ELEVATION 1/8" = 1'-0"
 ARCHITECTURAL



NORTH ELEVATION 1/8" = 1'-0"
 ARCHITECTURAL



B
GALVANIZED CAP DETAIL 3" = 1'-0"



EAST ELEVATION 1/8" = 1'-0"
 ARCHITECTURAL