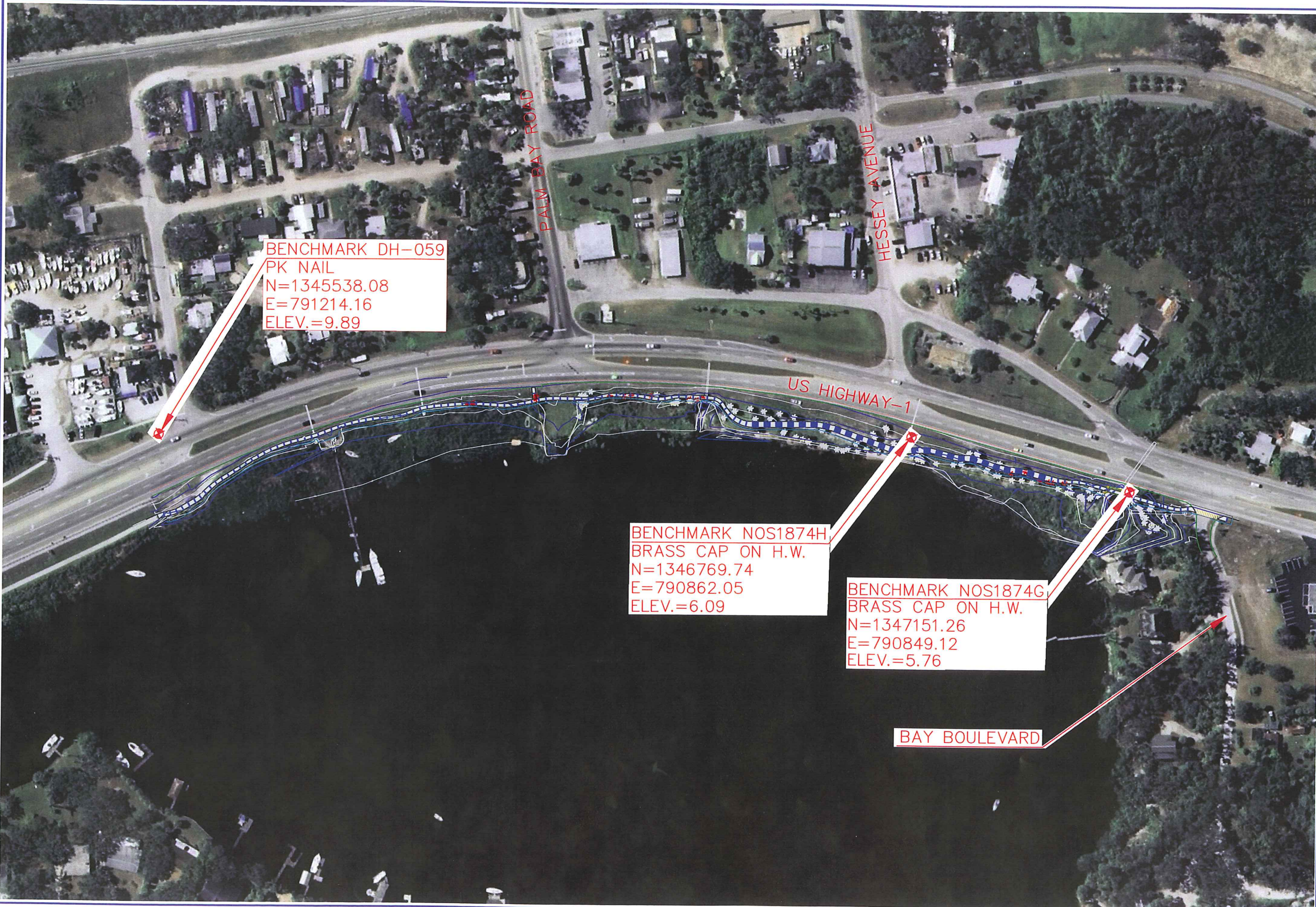


I:\707\70702.01-Bay Blvd to Turkey Creek (Mobile)\Autocad 07 Dwg\C100.dwg, Dec 13, 2007 - 9:03:01AM, ncdmms



BENCHMARK DH-059  
 PK NAIL  
 N=1345538.08  
 E=791214.16  
 ELEV.=9.89

BENCHMARK NOS1874H  
 BRASS CAP ON H.W.  
 N=1346769.74  
 E=790862.05  
 ELEV.=6.09

BENCHMARK NOS1874G  
 BRASS CAP ON H.W.  
 N=1347151.26  
 E=790849.12  
 ELEV.=5.76

**BASKERVILLE-DONOVAN, INC.**  
 INNOVATIVE INFRASTRUCTURE SOLUTIONS  
 PANAMA CITY ■ PANAMA CITY ■ TALLAHASSEE  
 MOBILE ■ BREVARD ■ SARASOTA  
 PANAMA CITY, FLORIDA 9001 (904)708-5800  
 ENGINEERING BUSINESS EB-0000340

*David L. ...*  
*12/13/07*  
*12/13/07*  
*12/13/07*

CITY OF PALM BAY  
 BAY BOULEVARD TO  
 TURKEY CREEK

NO.	DATE	BY	REVISIONS

The owner is responsible for the accuracy of the information provided and is not to be held liable for any errors or omissions.

PROJECT NO.	70702.01
DESIGNED BY	DEI
DRAWN BY	QMA
CHECKED BY	DEI
DATE	DECEMBER 2007

OVERALL LAYOUT